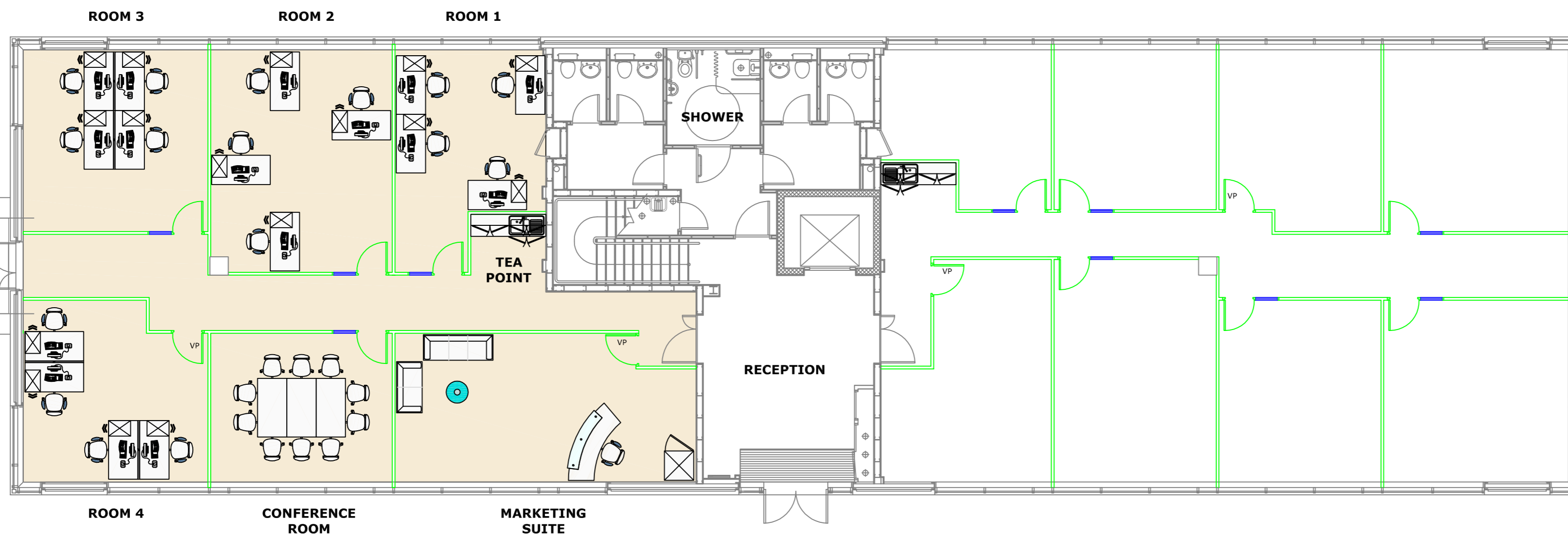


This drawing and the designs contained within are the property of Metrix Commercial Interiors Limited. Copyright is reserved by them and the drawing is issued on the condition that it is not copied, reproduced, retained or disclosed to any unauthorised person either wholly or in part without the consent in writing of Metrix Commercial Interiors Limited.



APPROVED FOR CONSTRUCTION

Signed _____



3 Station Court
Station Road
Bourne End
SL8 5YP

T 01628 553 640
F 01628 527 338

CLIENT	Ascot Business Park	
PROJECT	1 Queens Square Ground Floor	
TITLE	General Arrangement	

DRG No.	JB1005-GA-01	REV	A
DATE	08/05/11	DRAWN BY	SCad
CHECKED		FOR TENDER	
		FOR APPROVAL	
SCALE	1:100@A2	FOR CONSTN	
		AS INSTALLED	